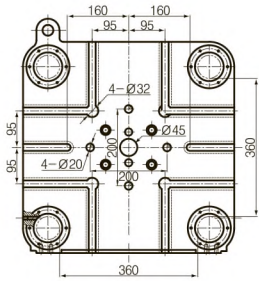


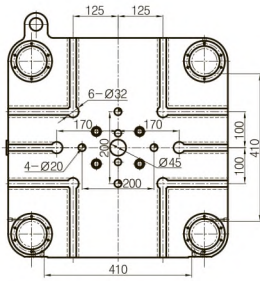


# Монтаж пресс-формы

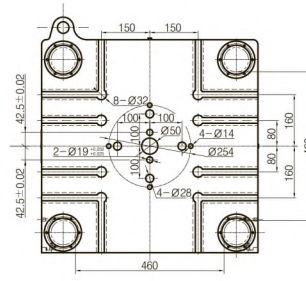
EDIA 80



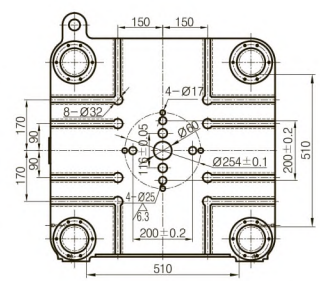
EDIA 120



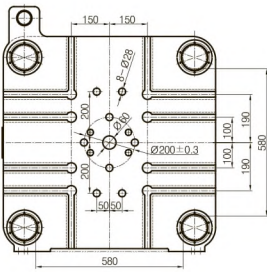
EDIA 150



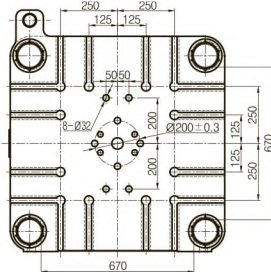
EDIA 200



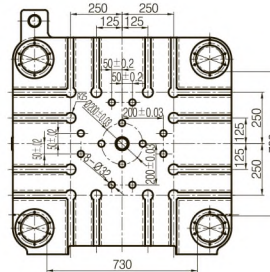
EDIA 250



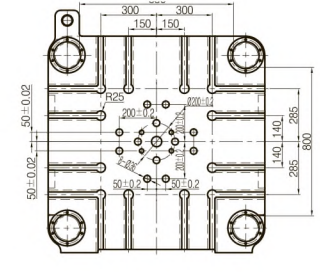
EDIA 300



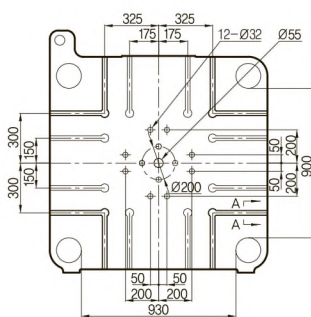
EDIA 380



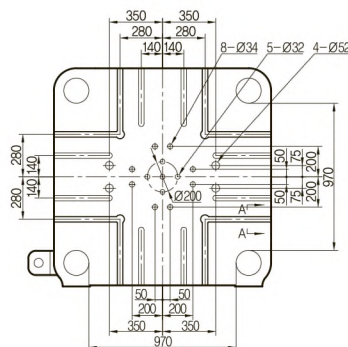
EDIA 450



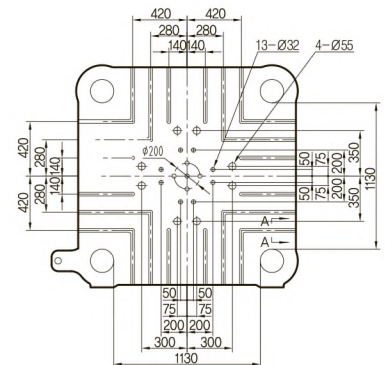
EDIA 650



EDIA 780



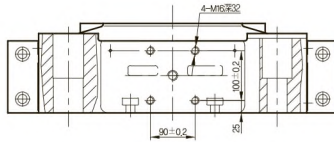
EDIA 1000



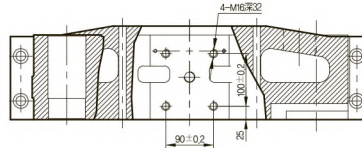


# Монтаж робота

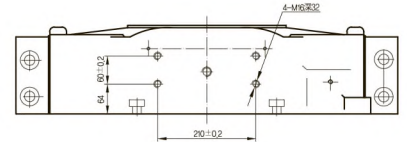
EDIA 80



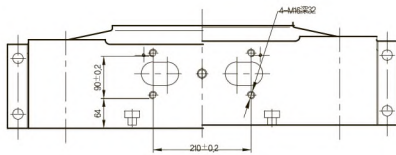
EDIA 120



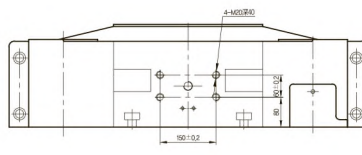
EDIA 150



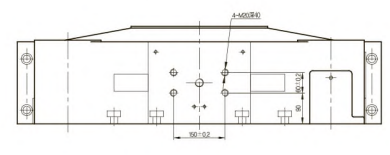
EDIA 200



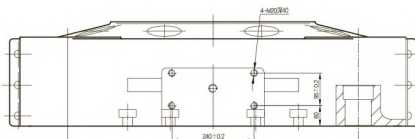
EDIA 250



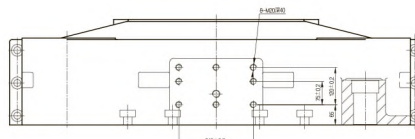
EDIA 300



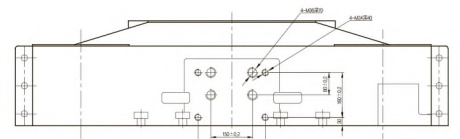
EDIA 380



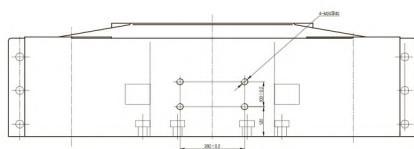
EDIA 450



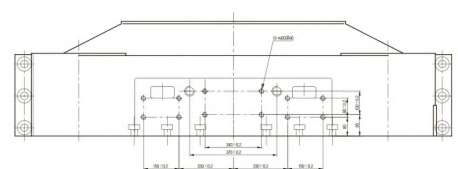
EDIA 650



EDIA 780



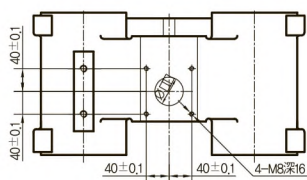
EDIA 1000



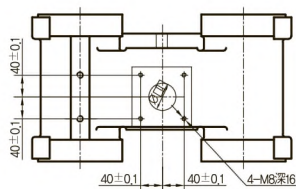


# Монтаж загрузочного бункера

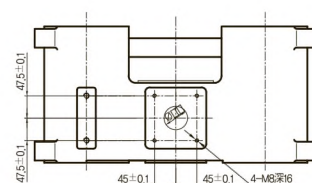
EDIA 80



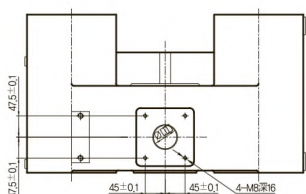
EDIA 120



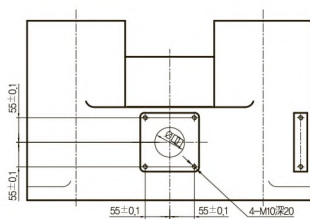
EDIA 150



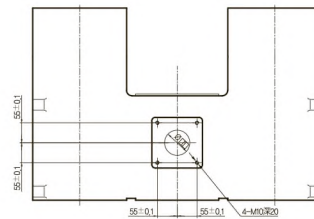
EDIA 200



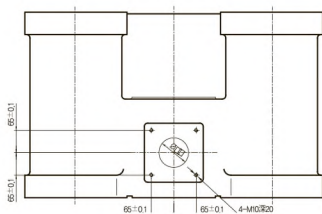
EDIA 250



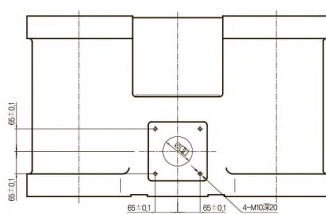
EDIA 300



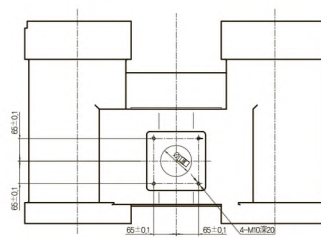
EDIA 380



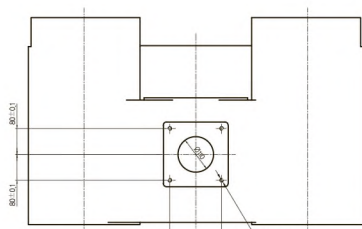
EDIA 450



EDIA 650



EDIA 780



EDIA 1000

